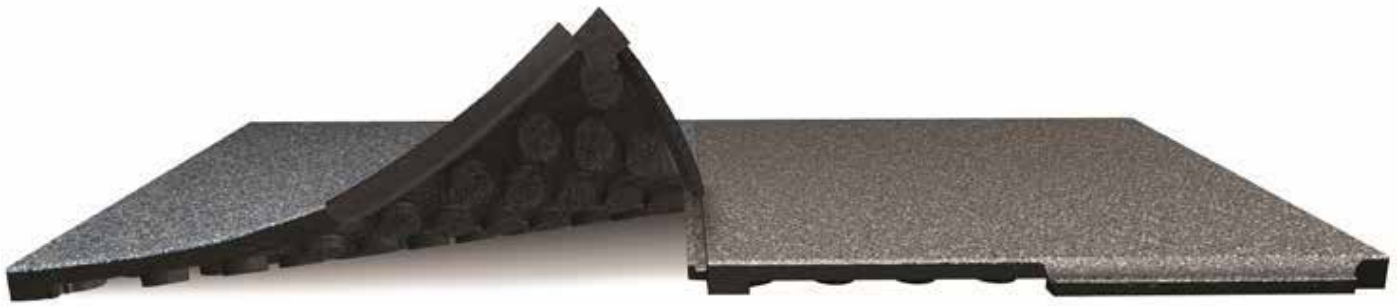


# DYNAMIK Gym-Flex Interlocking Rubber Tiles

# DYNAMIK



The DYNAMIK Gym-Flex tiles are an interlocking premium fitness flooring system perfectly suited to fitness suites and gyms with specialist biometric, plyometric or weight training areas. It is designed and engineered to maximize comfort, durability, functionality and visual appearance.

At 32mm thick, they provide superior sound insulation and shock absorption making them an ideal solution for those areas where sound reduction and floor protection is required, especially in gym areas above a solid ground floor. The tiles also offer exceptional resilience in helping to prevent muscle and joint injuries.

Each tile is constructed using 121 evenly distributed pedestals, creating pockets of air space for a superior cushioning effect. The tiles are interlocking for quick installation using no adhesive, making them either a temporary or permanent solution. The tiles can also be installed over cabling and can be installed with ramps to provide access to disabled users and provide a neat finish.

## Gym-Flex Benefits

- Superior sound and shock absorption
- Excellent resilience to prevent injuries
- Hides cables from gym machines
- Manufactured with 100% recycled rubber
- Temporary or permanent solution
- No adhesive required

## Technical Specifications



### Pedestal Construction

Each tile is constructed using 121 pedestals to provide superior sound insulation and shock absorption.



### Hidden Cabling

Unsightly cables can be run under the tiles, not only aiding the aesthetics of the floor but also reducing trip hazards.



### Wheelchair Accessibility

Ramps can be installed at doorways and along the perimeter to aid disabled users of the floor.

## Official Partners

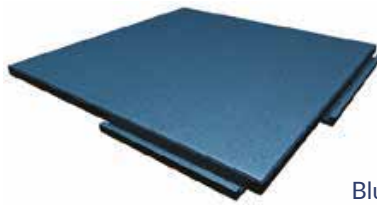


## Colour Chart

The Gym-Flex Tiles are available in the below standard EPDM fleck colours.



Black



Blue



Brown



Green



Grey

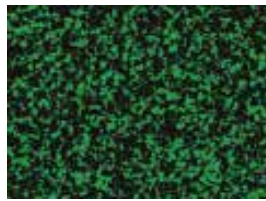


Terracotta

40% Fleck Colours (minimum order quantity 200m<sup>2</sup>)



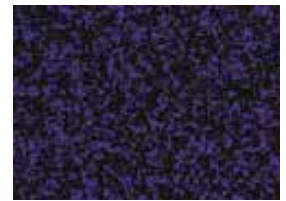
Blue



Green



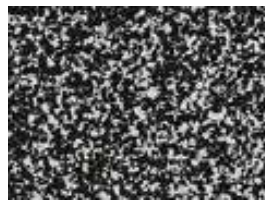
Orange



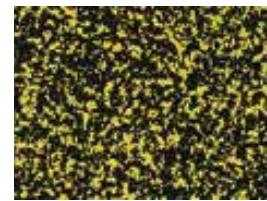
Purple



Tan



White



Yellow

## Technical Specifications

Tile Size	610mm x 610mm (0.37 m <sup>2</sup> )
Tile Thickness	32mm
Tile Weight	8.66 kg (23.3kg/m <sup>2</sup> )

## Specification Downloads



Product Specification downloads for our DYNAMIK products are available through NBS Source.

Product specifications may be subject to change without notice, please contact DYNAMIK for the latest product information